

MODEL 21 2-SPEED WINCH

MANUFACTURED AFTER MARCH 1, 1983

MAINTENANCE & SERVICE INFORMATION

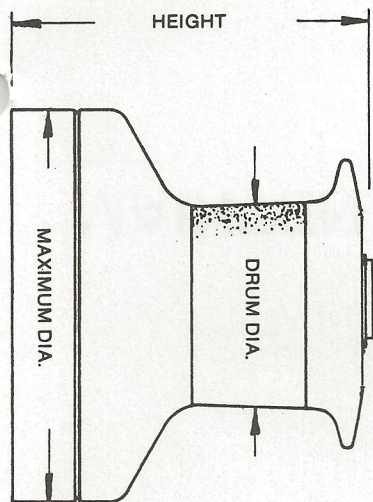
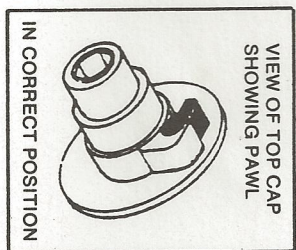
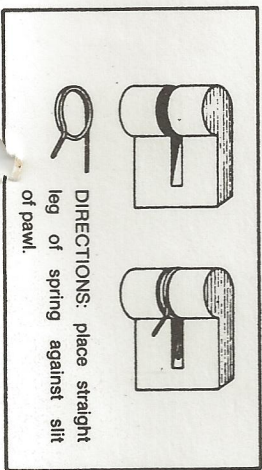
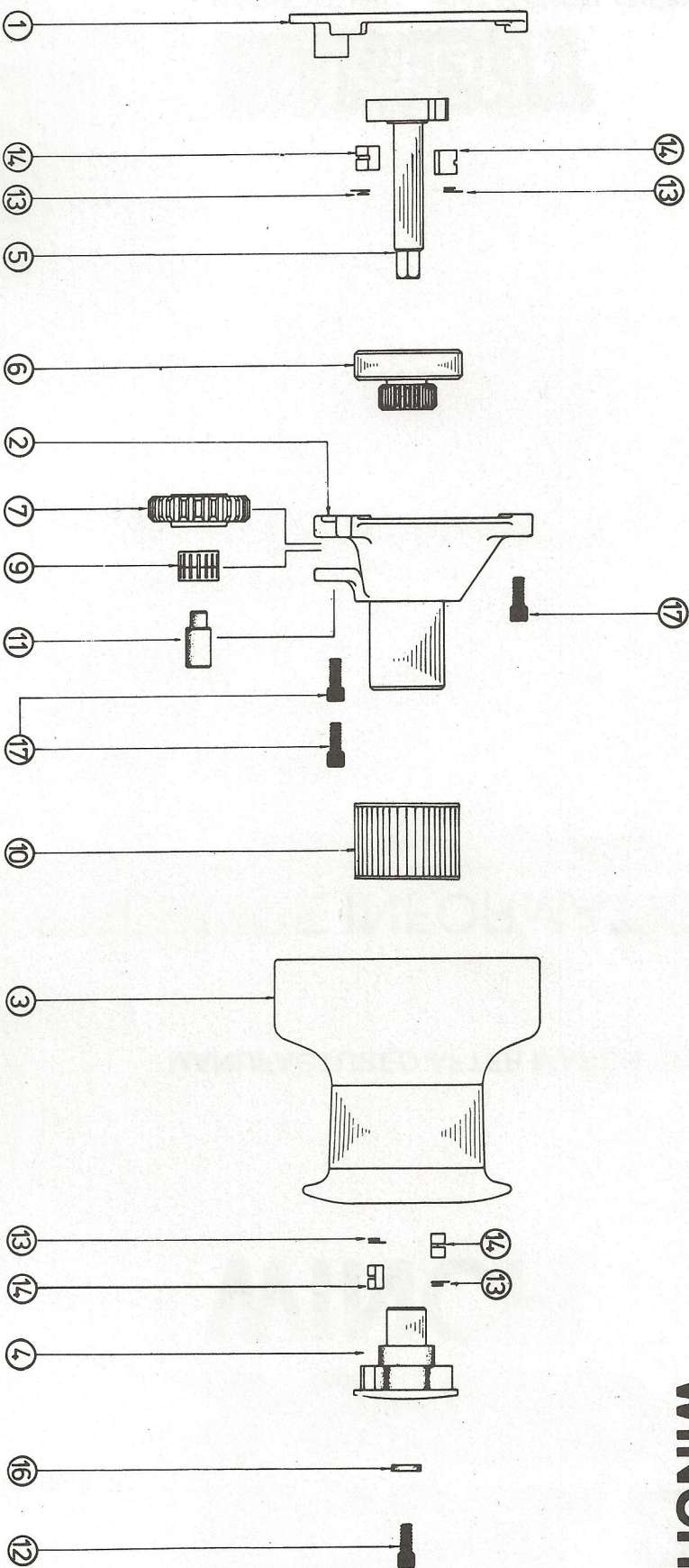
Quality Winches and Fine Yacht Gear

BARIENT

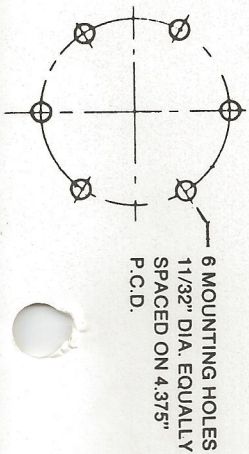
BARIENT INC., 3641 HAVEN AVENUE,
MENLO PARK, C.A. 94025
TELEX NO. 345559

MAINTENANCE & SERVICE INFORMATION

MODEL 21 2-SPEED WINCH



	Gear Ratio	
	1st	2nd
GEAR RATIO	1:1	4.3:1
POWER RATIO	6.9:1	29.3:1
DRUM DIA.	73mm	2.9"
MAXIMUM DIA.	146mm	5 ³ / ₄ "
HEIGHT	141mm	5 ⁹ / ₁₆ "



MOUNTING INSTRUCTIONS

1. Using dismantling handle and $\frac{3}{16}$ " Allen key remove the cap screw (12) in top cap (4).
2. Lift drum (3) and top cap (4) together from the gearbox (3) and base (1) —CAUTION the drum bearing (10) sometimes sticks to the drum and may be dropped.
3. Bolt the base (1) to a flat and smooth surface drilled to take six flat head bolts $\frac{5}{16}$ " (8 mm) dia. on $4\frac{3}{8}$ " (111 mm) bolt circle dia. It is not necessary to remove the gearbox (2) from the base (1). Use base (1) as a template.
Apply only light coat of bedding (sealing) compound to seal the base to the deck.
4. Slide the drum — top cap assy. together over the bearing (10) and gearbox (3).
5. Firmly tighten the capscrew (12) in the top cap (4).

TO LUBRICATE & DISASSEMBLE:

Note:

It is not necessary to remove the base (1) from the deck to lubricate this winch.

1. Dismantle as step 1 and 2 above.
2. Remove bearing (10) from gearbox (2) and top cap (4) from drum (3).
3. Remove three capscrews (17) and lift gearbox (2) from base (1).
4. Remove main shaft assy. (5) with ratchet center gear (6); idler gear (7); bearing (9) and shaft (11).
5. Remove springs and ratchet pawls from main shaft (5) and top cap (4).
6. Clean all parts in petroleum solvent. Replace any parts showing damage or excessive wear. During the assembly procedure all gears and bearings should be liberally greased with Barient — Barlube. The ratchet pawls should be lubricated with machine oil only — NEVER grease the pawls and springs.
7. To assemble winch; reverse dismantling procedure and steps 4 and 5 under "mounting instructions".

TOOL REQUIRED:

$\frac{3}{16}$ " and $\frac{1}{4}$ " Allen key, dismantling handle (01-821).

LUBRICANT: Non detergent Machine Oil (SAE 30); Barient Barlube.

INSPECTION & LUBRICATION:

Quarterly lubrication is recommended. Inspect more frequently in a racing season. Monthly cleaning and lubrication of the aluminium drum winches is advisable.

Item	Part No.	Description	Qty
1	24-002	Base	1
2	24-003	Gear Box	1
3	21-404A	Drum — Aluminium	1
Alt.	21-404C	Drum — Chrome	1
Alt.	21-404B	Drum — Bronze	1
4	18-405C	Top Cap — Chrome	1
Alt.	18-405B	Top Cap — Bronze	1
5	24-306	Main Shaft Assy.	1
6	21-407	Center Pinion 12T	1
7	21-408	Idler Gear 19T	1
9	01-010	Bearing (Bronze)	1
10	00422	Bearing	1
11	01-155	Idler Shaft	1
12	01-205	Cap Screw $\frac{1}{4}$ " unc x $\frac{5}{8}$ "	1
13	01-300	Spring	4
14	01-400	Ratchet Pawl	4
16	01-502	Retaining Washer	1
17	01-215	Cap Screw $\frac{5}{16}$ " unc x $\frac{5}{8}$ "	3